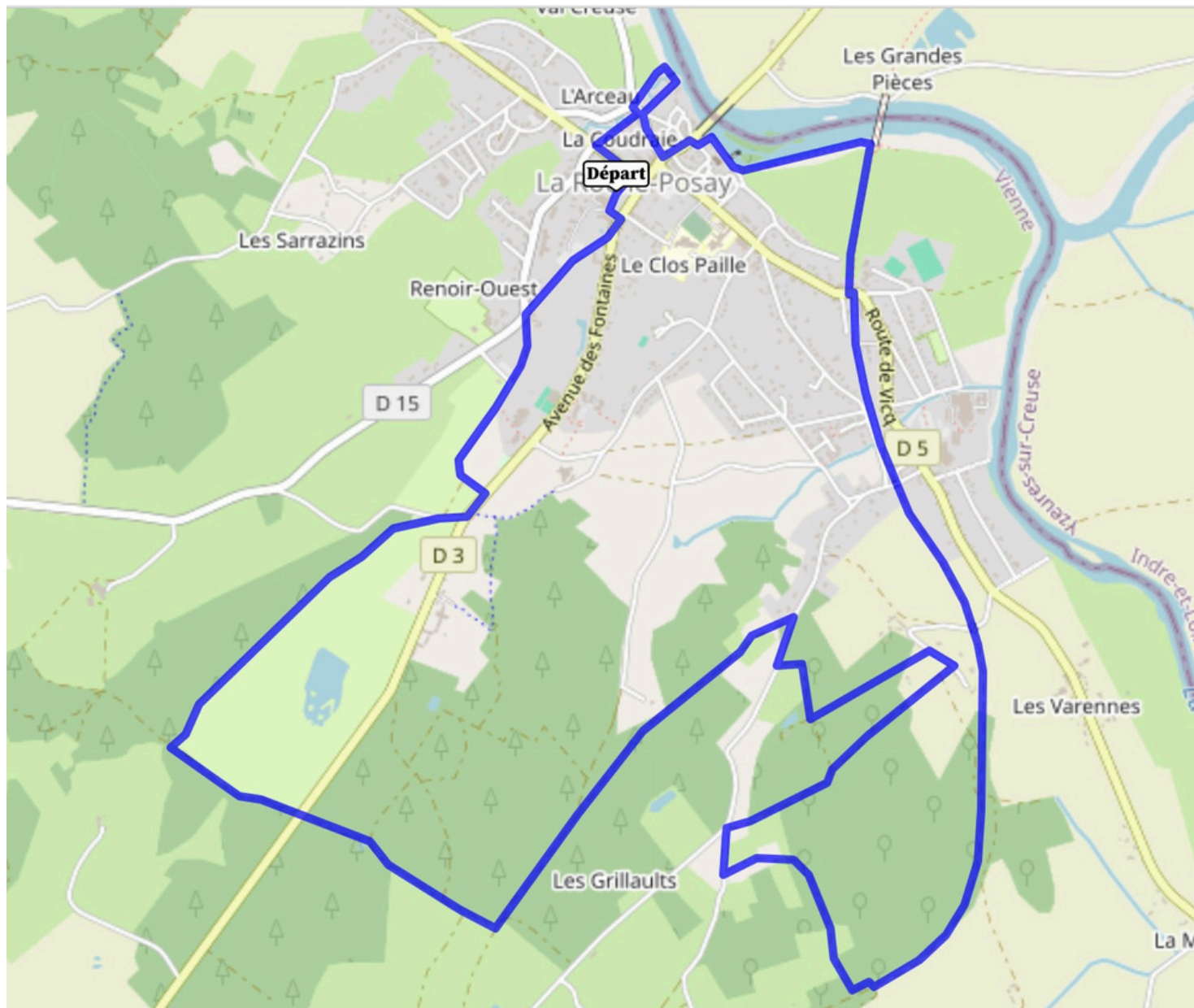


ORANGE Circuit 12.5km





Step 1: Depart from the Tourist Office. Cross the Place de la République then turn right onto Cour Pasteur.



Step 2: Turn right onto Rue des Enfants de Troupes. Go back up the street.



Step 3: Take a left onto Chemin du Golf.



Step 4: Continue straight on Chemin de la Tuilerie.



Step 5: At the stop sign, turn right onto Rue du Dr Benjamin Bord. Then continue straight for 100 m.



Step 6: Turn right onto the street, then continue straight to the next stop.



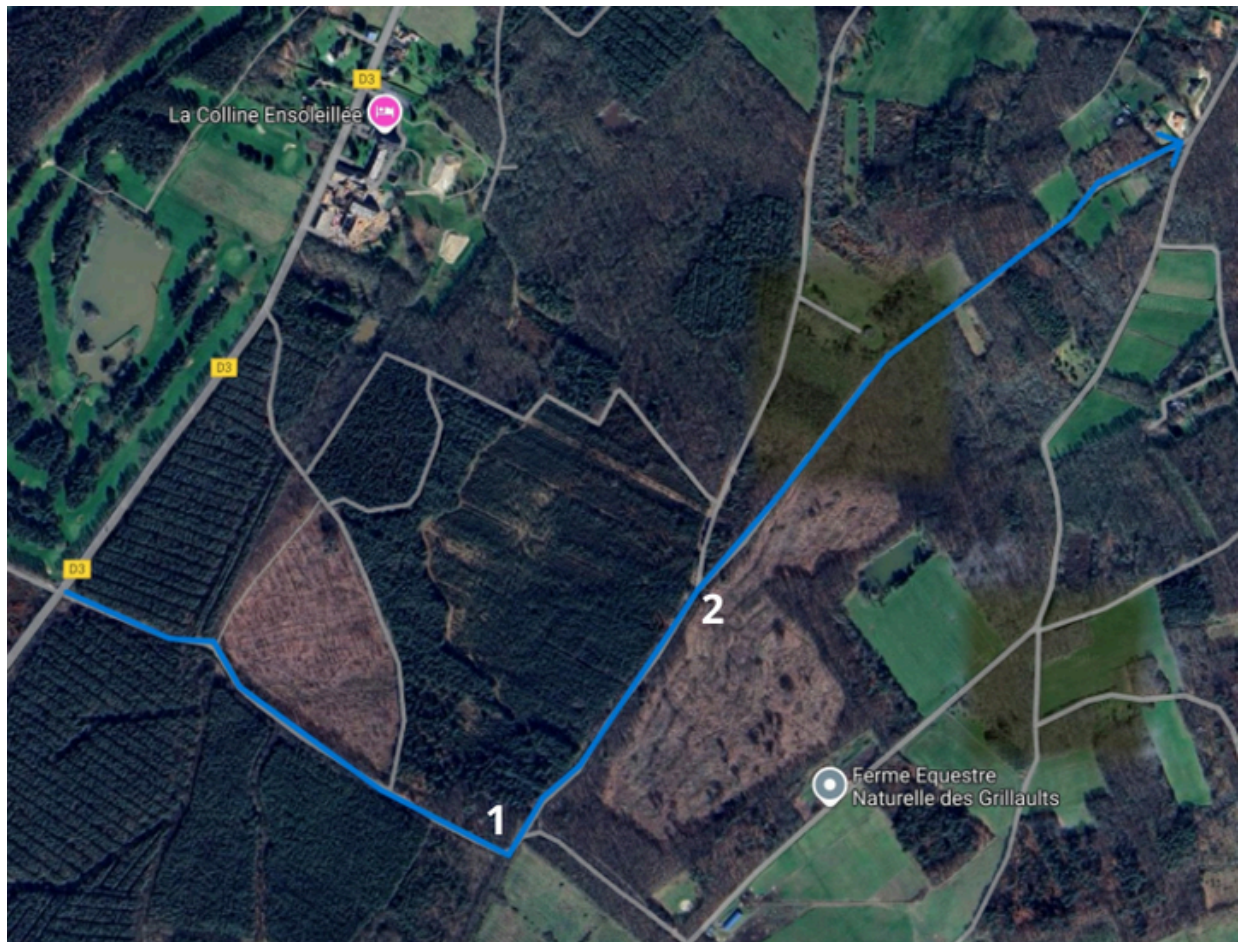
Step 7: Turn left onto the footpath and continue straight into the forest.



Step 8: At the end of the path, turn left and continue straight on the "La Grandinière" path



Step 9: At the intersection, continue straight on the footpath and follow the instructions in step 10.



Step 10: Continue straight.

1) Turn left onto the path, then go straight.

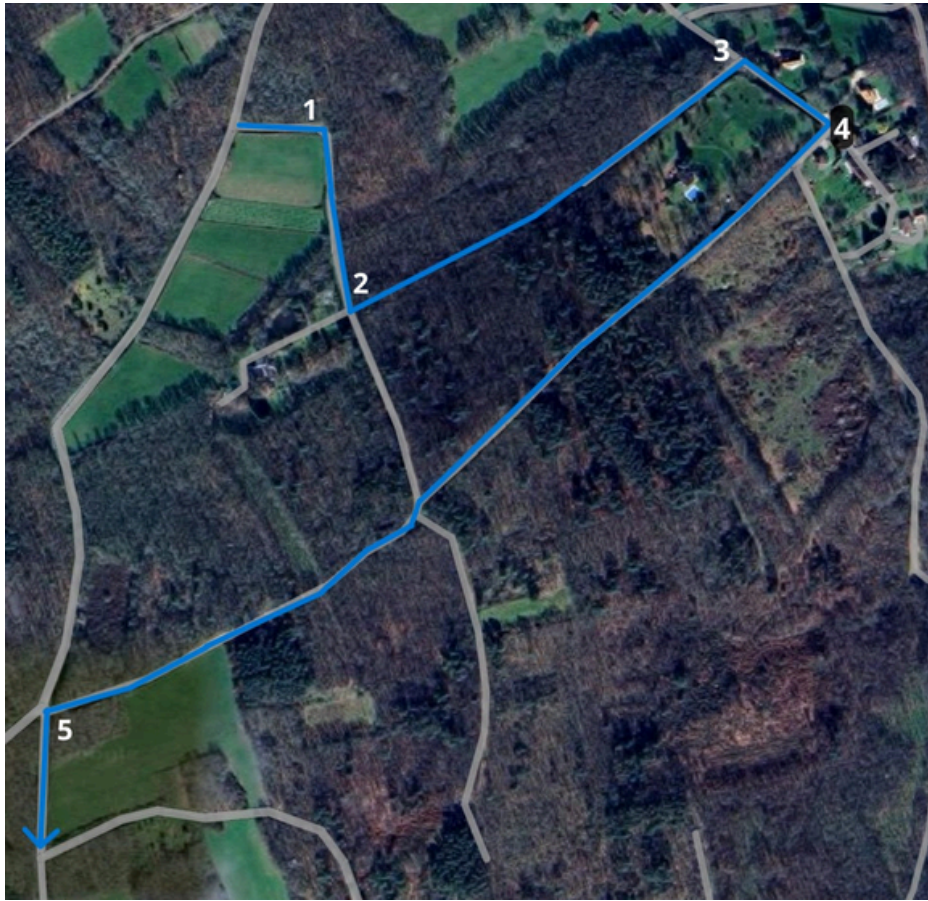
2) Turn right, ignoring the passage on the left, and continue straight until the next stop.



Step 11: At the intersection, turn right onto Pointe du Pré Copelin.



Step 12: Turn left onto the path and follow the instructions in step 13.



- Step 13: Continue straight then turn right (1).
 2) Turn left onto the path and continue straight.
 3) Turn right then continue for 100 m.
 4) Turn right then continue straight for 900 m.
 5) Turn left onto the road and go straight for 130 m.



Step 14: Turn left onto the path.



Step 15: Turn left and take the Ligne footpath from Châtellerault to Launay. Continue straight for 2.4 km.



Step 16: Cross Avenue de la Gare and take Rue de la Baignade.



Step 17: Turn right onto Rue de la Baignade and go straight on.



Step 18: At Baignade, turn left and take the footpath.



Step 19: At the end of the path, turn right onto Rue des Remparts and continue straight on.



Step 20: Turn right onto Rue Notre Dame.



Step 21: Turn left onto Rue Bourbon and pass under the city gate.



Step 22: After the city gate, turn right into Rue de Falk.



Step 23: Before the bridge, turn right onto Rue de la Cale. Go down the street.



Step 24: At the bottom of the street, turn left and cross the bridge to reach Rue des Tanneries. Go back up the street.



Step 25: At the top of the street, turn left and cross the bridge.



Step 26: After the bridge, turn right and go down the stairs to reach the entrance to the Parc des Confluences. Cross the park.



Step 27: At the exit of the park, turn left onto Rue Pierre Denis Rousseau.



Step 28: Turn right onto Boulevard Victor Hugo to reach the Tourist Office.